



apac.idec.com

OPERATOR INTERFACES WITH DURABLE GLASS PCAP TOUCHSCREENS. IOT FUNCTIONALITY, WIRELESS CONNECTIVITY AND DEVICE COMPATIBILITY MAKE THESE HMIS VERSATILE AND HIGHLY ADAPTABLE.

HG1J/HG2J series

Compact and durable, the HG1J and HG2J are reliable operator interfaces for harsh environments. Both units have a larger display area than previous models. The glass touch panels demonstrate impressive resistance to water, dust, dirt, and UV rays.

SWITCHES

SAFETY

PANEL

AUTOMATION

MAIN APPLICATIONS

The HG1J and HG2J are made for demanding applications:

- Control and monitoring of large equipment
- Large factories and warehouses
- Remote device management
- Extreme (high/low) temperature environments
- Dirty/wet working conditions



TECHNICAL FEATURES

- Immersive PCAP touchscreen (HG1J: 4.3 inch, HG2J: 7.0 inch)
- Reinforced glass with environmental resistance
- High water resistance (IP66F/IP67F)
- Wide operating temperature range
- EtherNet/IP and MQTT compatible
- Built-in programming software



HG1J/HG2J

ROBUST OPERATOR INTERFACES,
EASY TO USE AND MAINTAIN

CUSTOMER BENEFITS

- Increased display size: slimline bezel design maximizes the screen area.
- Easy wiring: push-in terminal block for serial interfaces.
- Battery-free design: low maintenance, less paperwork for international shipping.
- Tempered glass PCAP touchscreen: scratch and UV resistance maintains display clarity.
- Device compatibility: connect USB devices for audio, Wi-Fi and more.
- User-friendly software: language options and intuitive dialog boxes keep things simple.

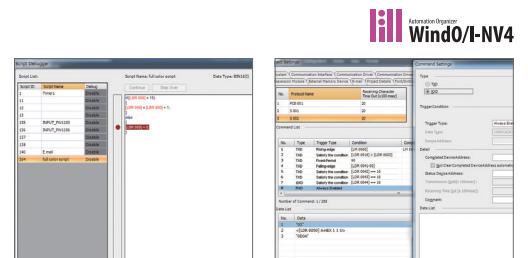
END-USER EXPERIENCE

- Color display remains highly visible and responsive throughout years of use.
- Touch panel supports multi-touch sensing, can be operated with gloves up to 1.5mm thick*, and prevents accidental input by water droplets.
- Easy to wipe clean with alcohol or disinfectant.

* The touchscreen may not work with gloves less than 1.5mm thick, depending on the material or environment. Check the operation in the actual environment or under similar conditions.

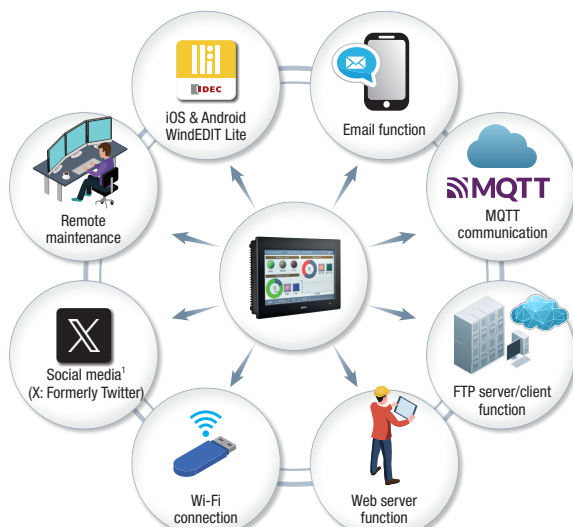
EASY-TO-USE SOFTWARE, IOT COMPATIBILITY

- WindO/I-NV4 software as part of Automation Organizer
- Script function simplifies programming
- User communication function for custom protocols
- Web server function for remote operation and maintenance



ADVANCED CONNECTIVITY

- USB-A ports, serial ports (RS232C and RS422/485), Ethernet port
- Compatible with MQTT, EtherNet/IP, Modbus TCP, and PLCs from other makers
- Dedicated app, Wi-Fi, FTP client function, email, social media integration and more



1. Subject to change depending on specifications and service updates.

HG1J OR HG2J: WHICH ONE TO CHOOSE?

HG1J

- Compact 4.3 inch display
- 32 brightness levels
- TFT color LCD (16.77 million colors)
- Operating temperature range: -20 to +55°C

HG2J

- Captivating 7.0 inch display
- 48 brightness levels
- TFT color LCD (65,536 colors)
- Operating temperature range: -20 to +60°C

➡ Visit the product page

➡ Consult the brochure

apac.idec.com
marketing.apac@idec.com

